



2019 3Q/4Q DISTINGUISHED LECTURER



BAGS
BAY AREA GEOPHYSICAL SOCIETY



Practical insights and techniques in seismic velocity estimation

Presented by John T. Etgen, BP, Houston, Texas

December 4, 2019, 6:30 PM

California State University, East Bay

25800 Carlos Bee Blvd, Hayward 94542

Science South (SC-S) 143

WHY ATTEND?

- Keep current with the latest developments in geophysics
- Network with your colleagues
- Lectures are 45 minutes to an hour long

Supported through the SEG Foundation by



For abstract, lecturer bio, and more, visit seg.org/education/lectures or email jwall@seg.org



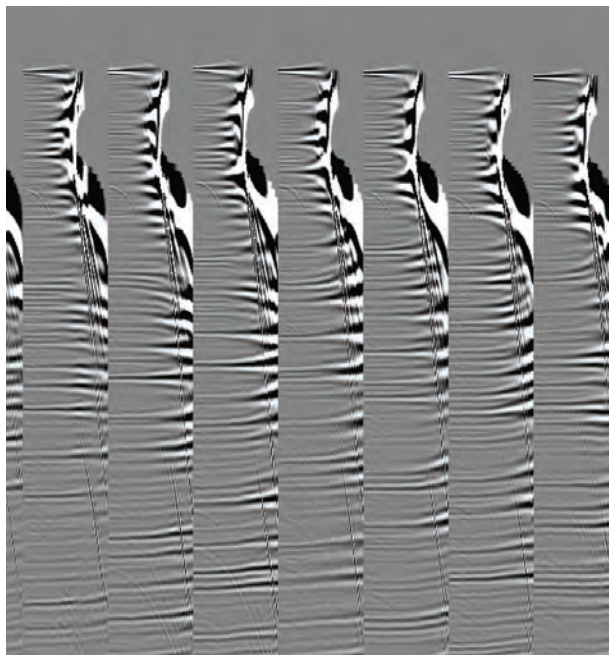
2019 3Q/4Q DISTINGUISHED LECTURER

Practical insights and techniques in seismic velocity estimation

Presented by John T. Etgen, BP, Houston, Texas, USA

ABSTRACT

The estimation of seismic wave speeds plays one of the most important and critical roles in seismic data processing. As we explore more complex and previously unexplorable provinces, as well as demanding ever-higher quality images from seismic reflection data everywhere, accurate velocity models are of paramount importance. I feel this topic is so important that everyone involved in creating images from seismic reflection data should understand the fundamentals of seismic velocity estimation and be able to recognize limitations and pitfalls in practical applications.



This lecture is designed to provide insights into how seismic velocity estimation really works, what you can resolve, and what you will have difficulty resolving. I will present experiments that demonstrate the power and limitations of tomographic approaches that rely on iterative prestack migration. During this discussion you will learn concepts that might at first seem counter-intuitive; for example, lateral resolution of velocity anomalies can often be higher than vertical resolution. I will demonstrate simple and effective ways of performing analysis and quality control during velocity model construction. Finally, we will discuss emerging and advanced methods for building velocity models in the most complex settings that are currently of industrial interest.





BIOGRAPHY

John T. Etgen received a bachelor of science degree in geophysical engineering from the Colorado School of Mines in 1985 and a Ph.D. in geophysics from Stanford University in 1990. During his studies, he had the good fortune to work on a wide variety of topics in seismic imaging and data processing while learning from his mentors, Jon Claerbout and Norm Bleistein, along with many talented colleagues and fellow students. His thesis studied new-at-the-time prestack migration-driven tomographic techniques for velocity estimation. That experience taught him the true difficulties of inverse problems. Leaving Stanford behind, he began his industrial career in late 1990 at the Amoco Production Research Company in Tulsa, Oklahoma. Unlike many new Ph.D. graduates, he did not want to continue to work on his thesis topic! Fortunately, once again he had the opportunity to work on a wide variety of topics and learn from leading researchers, such as Dan Whitmore, Rusty Alford, Kurt Marfurt, Ken Kelley, Sam Gray, and many others. In 1999, Amoco merged with British Petroleum (BP) and John moved to Houston, Texas. His role was senior scientist and then senior scientific advisor for seismic imaging at BP. In 2008, he and Carl Regone were awarded the Virgil Kauffman medal for their work in wide-azimuth marine seismic. In late 2011, John was appointed distinguished advisor for seismic imaging at BP. John currently serves as assistant editor for the scientific journal *GEOPHYSICS* and continues to work in the upstream technology organization at BP.

To see John Etgen's full itinerary or to view previous Honorary and Distinguished Lecturer presentations, visit: seg.org/education/lectures

"It is really a fundamental part of the scientific process to build upon the ideas of others. I think that SEG plays a critical role in creating a community for the exchange of ideas to progress our field and to progress our science."

-Sarah Reed, Research Geophysicist at Energy & Environmental Research Center and Adjunct Lecturer at Southern Methodist University

"It's up to you to make sure that you remain very well informed, and you will be a valuable employee wherever you choose to work. There's really no other way to do that as effectively as being a member of a professional organization like SEG."

-Klaas Koster, Chief Geophysicist, Occidental Oil and Gas

SEG PROFESSIONAL DEVELOPMENT

SEG Professional Development provides educational opportunities through courses and lectures taught by recognized geophysical experts from all over the world. The topics are structured to serve industry professionals at all stages of their careers and via a variety of learning channels. These include:

Continuing Education
Distinguished Instructor Short Course (DISC)
Distinguished Lecture Program (DL)
Honorary Lecture Program (HL)
SEG on Demand
EVOLVE

Learn more at seg.org/education or email jwall@seg.org.

NOT AN SEG MEMBER? JOIN TODAY!

Connect with thousands of members from more than 120 countries. Some of the benefits include:

- 12 issues of *The Leading Edge*
- One-year online subscription to your choice of *Interpretation* or *GEOPHYSICS* journals (Student members receive one-year online subscriptions to both)
- Access to the SEG Digital Library; includes *TLE* (1982–present), *GEOPHYSICS* (1936–1999), and abstracts from the SEG Annual Meeting and other industry association events
- Savings on SEG's International Exposition and Annual Meeting, workshops, webinars, conferences, and SEG training courses
- Access to SEG's Competency Management System
- Access to downloadable maps using Geofacets-SEG Millennium Edition
- Savings of up to 45% on most titles in the SEG Shop
- HL/DL recordings in the SEG on Demand Media Library
- Author-fee discounts for *GEOPHYSICS* and *Interpretation* authors
- Networking opportunities with professionals from all disciplines of the geosciences sector
- Employment assistance and career development support
- Access to the SEG Insurance Program through GeoCare Benefits Insurance Program

Further your career at seg.org/join.

ABOUT SEG

The Society of Exploration Geophysicists is a not-for-profit organization committed to connecting the world of applied geophysics. With thousands of members from more than 120 countries, SEG provides educational and technical resources to the global geosciences community through publications, books, events, forums, professional development courses, young professional programs, and more. Founded in 1930, SEG fosters the expert and ethical practice of geophysics in the exploration and development of natural resources, characterization of near surface, and mitigation of earth hazards. For more information visit seg.org.